

N.W. 1/4

10-1

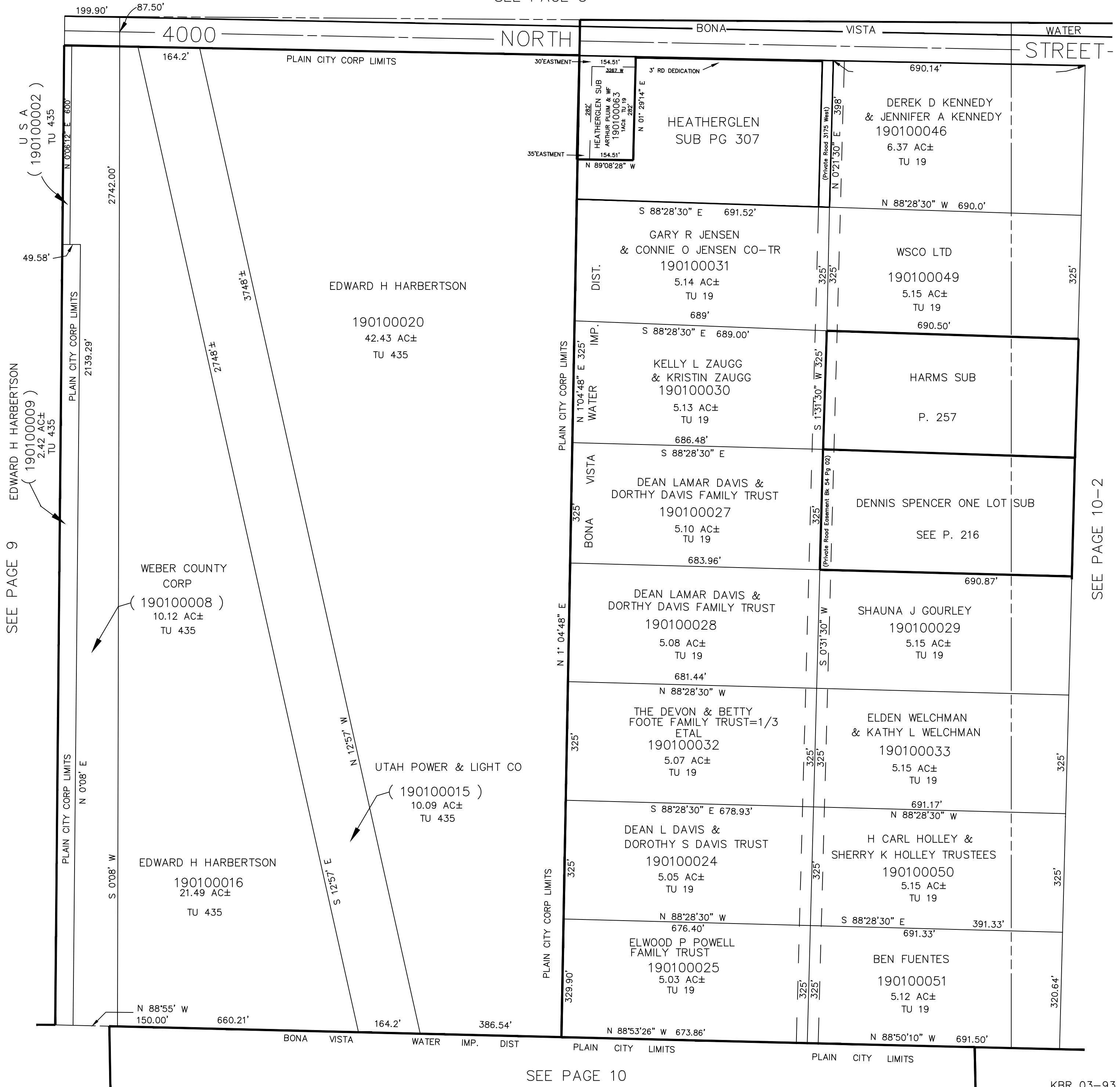
SECTION 22, T.7N., R.2W., S.L.B. & M.

IN WEBER COUNTY, PLAIN CITY

TAXING UNIT: 19, 435

SCALE 1" = 200'

SEE PAGE 3



SEE PAGE 9

SEE PAGE 10-2

SEE PAGE 10